

PRESS KIT
April 2026

CERASA®

PRESS OFFICE
relazioniesterne@cerasa.it
www.cerasa.it

SISTEMA NEWS: CARTABIANCA E SEGNO

On the occasion of Milan Design Week, Cerasa presents a preview of the restyling of the Sistema line, the bathroom furnishing project composed of two collections, **CartaBianca** and **Segno**. Thanks to its **wide modularity** and **extensive range of materials and finishes**, it ensures functionality and customization in response to each customer's needs.

The collections are completed by accessories and complementary elements designed in harmony with the furnishing proposals and with originality, ensuring customization down to the smallest detail.

The restyling was curated by **Studio Stefano Spessotto** and originates from a careful analysis of **new ways of experiencing the bathroom**: a place not only of functionality and physical well-being, but above all an environment of **connection with our inner selves**. From this perspective, great attention has been paid to the care of spaces, the lines of the compositions, materials and their finishes, and lighting. The result is a scenario where rationality and creativity, dimensional realism and customization coexist, and where the **sensory aspect** clearly emerges. The offering is designed to furnish an environment in which all the elements of nature (water, earth, air, and fire) come together and come into contact with the body. The new materials have been selected to ensure regenerative tactile sensations; in particular, both collections feature **15 new laminate finishes**, with wood, textured, and smooth effects.



PRESS KIT
April 2026

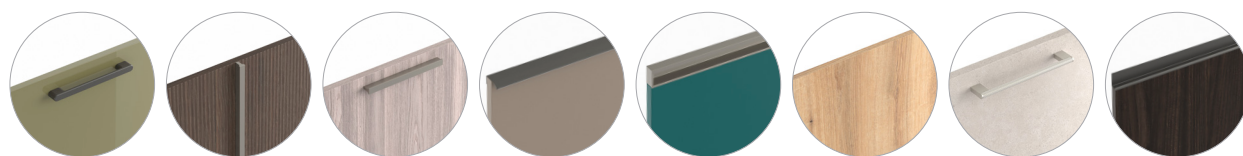
CERASA®

PRESS OFFICE
relazioniesterne@cerasa.it
www.cerasa.it

CARTABIANCA

A **contemporary style** defines the CartaBianca bathroom furniture, characterized by the possibility of customizing the fronts through a **wide selection of handles**. All 9 proposals have distinctive features; in addition to the **push-pull system**, which ensures a very minimal design, the range includes metal handles in Nickel and Champagne finishes, as well as lacquered versions tone-on-tone or in contrast with the front, strongly characterizing it.

CartaBianca offers an almost **infinite modular composition**: from more classic closed units to open ones, with variable depths, from base units to wall units designed to solve and interpret space. The **numerous finishes** enhance the bathroom's aesthetics and amplify customization, also available in the choice of tops and washbasins. Thanks to the modules, it is also possible to create elegant wall paneling and large storage spaces, customizing the interiors in a highly functional way with **mats and metal organizers**. Complements and accessories emphasize functionality and creativity with coordinated or contrasting material references, always carefully designed within a furnishing system that allows truly **unique customization**, interpreting space, function, and the identity of those who live in such an intimate room.



MAN049

MAN050 V

MAN050 O

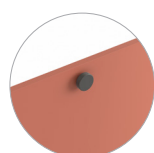
MAN051

MAN052

PUSH-PULL

MAN034

MAN053



POM009

PRESS KIT
April 2026

CERASA®

PRESS OFFICE
relazioniesterne@cerasa.it
www.cerasa.it

COMPOSITION 1

Composition made in the new **Fondente Laminate** finish and consisting of base units H. 48 cm with 2 drawers and **MAN039 Nickel** handle. The top is in **Bianco Carrara marble**, prepared for the **Aura 1** basin. This composition features a series of innovations: the distinctive **Hug decorative element** that encloses the washbasin base, in Fondente melamine, protruding both in height and depth; the **Datena mirror**, with perimeter LED lighting, anti-fog system, and Bluetooth setup; and the **Teisy pendant lamp**, equipped with a magnet to direct the light as desired. Composition size: W. 254 cm D. 53.5 cm.



PRESS KIT
April 2026

CERASA®

PRESS OFFICE
relazioniesterne@cerasa.it
www.cerasa.it

COMPOSITION 2

Composition made in the new **Fondente Laminate** finish and consisting of base units H. 24 cm, with Champagne-finish handle. The protagonists are the **basins made of Capraia Gres**, designed by Cerasa; at the back they feature a lowered section that allows the mixer tap to be housed, and the basin position can be chosen according to needs or aesthetic preferences. **Class mirrors** with integrated vertical LED lighting complete the composition. The space can also be furnished with **tall units** that ensure storage capacity and allow **corner solutions**, as in this configuration. Another new feature is represented by the **Mushroom coffee tables**, circular and available in multiple materials, finishes, and sizes. Composition size: W. 335 cm D. 51.3 cm.



PRESS KIT
April 2026

CERASA®

PRESS OFFICE
relazioniesterne@cerasa.it
www.cerasa.it

SEGNO

The Segno collection is characterized by the **absence of handles** in its compositions, replaced by **groove system** that serves as the opening mechanism and gives the whole a modern, contemporary look with clean lines. Segno embodies elegance in every component. The furniture fits seamlessly into various contexts, carefully supporting functionality and organization.

In the restyling of the collection, Studio Spessotto updated the construction technique of the groove, enriching it with an **insert in the same finish as the composition**. It can still be applied to every front or, in the case of units with two drawers, it is possible to opt for a single central groove that allows both to be opened. Essentially, the groove is a handle that exists but is not visible: it creates chromatic effects, compositions of solids and voids, formal rigor, and beauty.

The **modularity and endless compositional possibilities** of Segno harmoniously interpret different needs. In addition, the furniture can be customized in a **wide range of finishes**, from colored or textured melamines, to wood veneers, to glossy or matte lacquers, also available in custom colors, as well as veneered woods. Furthermore, for lacquered and veneered fronts, it is possible to choose a 3D texture. A pure and essential aesthetic enriched by details in furniture, accessories, and complements.



Champagne



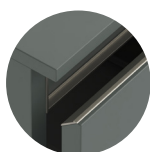
Color



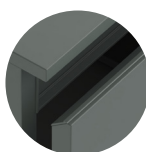
Champagne



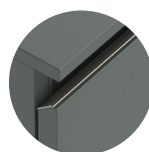
Color



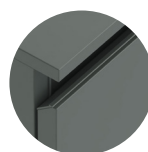
Champagne



Color



Champagne



Color

PRESS KIT
April 2026

CERASA®

PRESS OFFICE
relazioniesterne@cerasa.it
www.cerasa.it

COMPOSITION 1

Nebbia lacquered composition with 3D-effect fronts, consisting of base units with drawer H. 32 cm and side finishing panels. The **open compartment** lightens the visual impact and stands out for its **folding construction** technique. The top with washbasin is made of **Statuario Gres** and matches the backsplash, in the same material, shaped to house a **circular mirror with a diameter of 50 cm**, ideal for skincare and makeup routines. A Recto mirror is mounted in the washbasin area, and lighting is provided by the **Lol pendant lamp**, with adjustable light direction. Composition size: W. 278 cm D. 51.3 cm.



PRESS KIT

April 2026

CERASA®

PRESS OFFICE
relazioniesterne@cerasa.it
www.cerasa.it

COMPOSITION 2

Composition made of **Noce Canaletto veneer wood** and consisting of a washbasin base unit W. 105 cm H. 48 cm with 2 drawers and a **single central groove**, combined with a base unit W. 85 cm with **recessed side panel** that can house shelves or various accessories, such as a toilet paper holder as shown in this solution. The top is made of **Gre Arlecchino Gres** with integrated basin. The Recto Plus mirror with perimeter LED lighting and wall units H. 120 cm complete the composition. A new feature is represented by the **Nuvola floor-standing sanitary ware** and the wall unit above (H. 120 cm), made with a **raised bottom** to accommodate a towel holder. Composition size: W. 190 cm D. 51.3 cm.

